

## HOW TO GET TO HIGHWAY 109 FROM THE KOSHARE MUSEUM?

From the Koshare Museum parking lot, head east on Colorado Avenue. Turn right at the stop sign.

Follow Colorado Avenue until you reach the four way stop at 22<sup>nd</sup> Street. Turn left onto 22<sup>nd</sup> Street.

Follow 22<sup>nd</sup> Street until you reach the stop sign at Adams Avenue/Highway 109. Turn right onto Highway 109.

Follow Highway 109 for about twelve miles until you see the sign for Vogel Canyon. Turn right onto the dirt road following the sign.

## WHERE TO SEE TARANTULAS

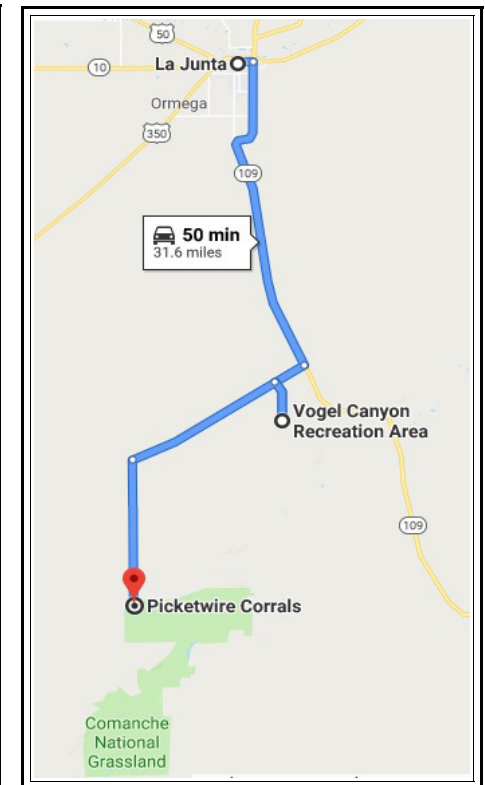
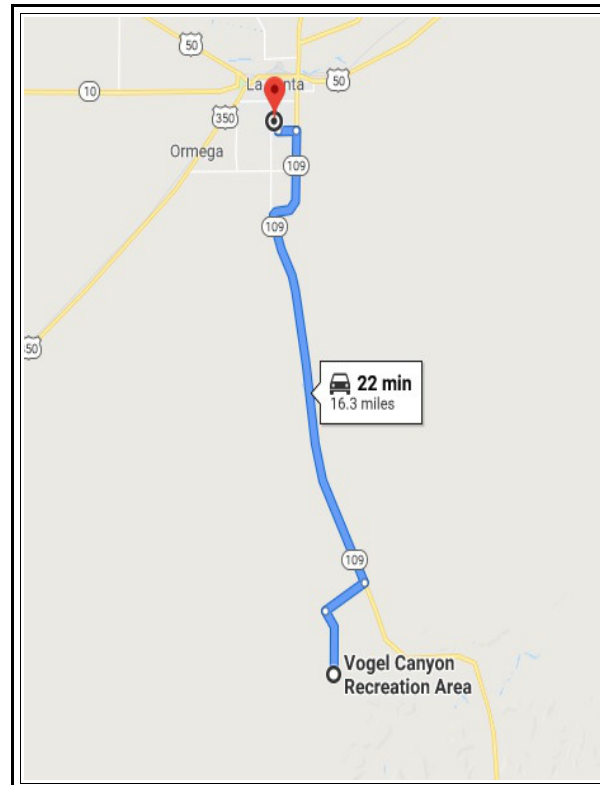
For the best places, you'll have to go outside of La Junta for at least five miles. Some of the most popular places to see the tarantula migration are found on Highway 109 from La Junta to Kim and Highway 350 from La Junta to Trinidad.

However, these highways are not the safest places to stop when viewing tarantulas.

While you may see several tarantulas walking across the road, these highways do not have adequate pull-off shoulders for vehicles to park – making it extremely dangerous for you and other drivers.

We have found the safest locations for tarantula spotting to be the areas around Vogel Canyon and the Picketwire Corrals. At these sites, there are places to park and trails to hike. Please use caution when driving this dirt road – do not make sudden stops or sharp turns due to the loose gravel.

If you go at the right time, you should be able to spot tarantulas crawling across the road or right off to the side of the road while driving. However, if you are visiting the area in the daytime or early evening hours, you may need to make several passes or even hike the area in search of tarantulas. Make sure to read the Tarantula Tips section for the best times to view, precautions to take, and helpful hints to guarantee a tarantula encounter.



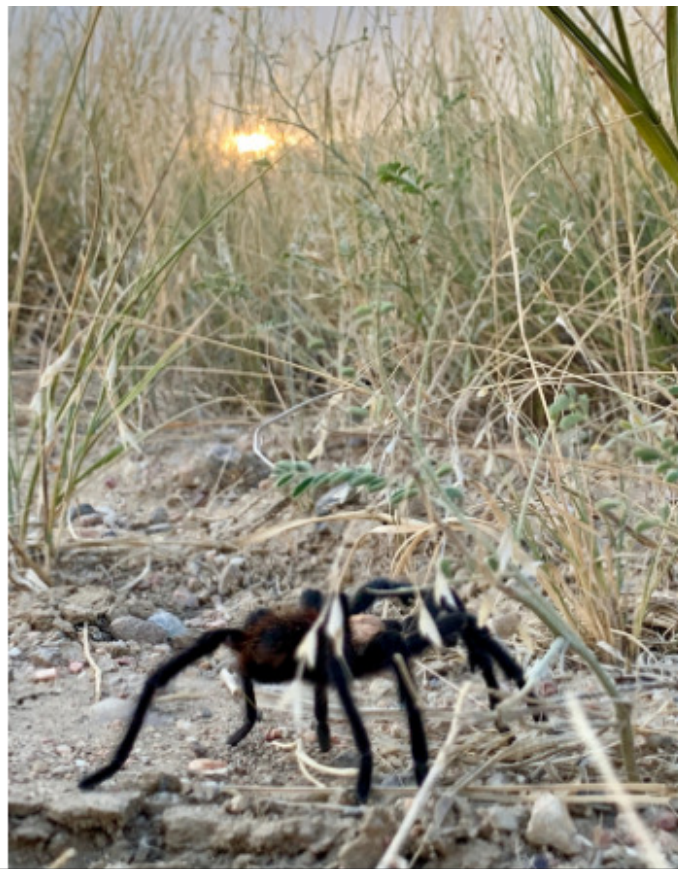
## Just looking for love...

Each fall, thousands of tarantulas venture away from their homes in search of a mate. During this time, they can be seen throughout the day and into the night crawling across the Plains.

It's not a true migration out of the area, but some males will crawl up to a mile for an event that is not typical of their usual behavior during other parts of the year.

## BEST TIMES

- Dusk and night. They are most active in these hours and through the early morning.
- September thru October before it freezes. Mid-September is usually the peak.
- Warm days that are not windy.



## WORST TIMES

- Mid-day and prior to dusk. While tarantulas can be found during this time, it will take some searching and plenty of patience.
- Windy weather and extreme heat usually encourage tarantulas to seek shelter.
- Days with prolonged cold or freezing temperatures.

## RESPECT

- It's taken eight to ten years for these tarantulas to reach sexual maturity. Let them fulfill their purpose so generations can enjoy the migration for years to come.
- Make sure to pull completely off the roads or highways for your safety and the safety of other drivers.

“ Each year, thousands of tarantulas march through Southeast Colorado in search of a mate. It's a sight to see or avoid - depending on how much you like spiders. ”

## CAUTION

- These tarantulas are usually docile. Just like any wild animal, they will defend themselves if provoked. A tarantula bite may cause a mild allergic reaction similar to a bee sting.
- If you are hiking, bring a buddy, inform others about your hike, and go with hiking essentials.
- Rattle snakes, domestic cattle, mountain lions, and other wild animals live in the grasslands. Take all precautions to keep yourself safe.
- Keep kids nearby. Traffic, wildlife, and other risks exist that could lead to injury or death.

## EXPERIENCE THE AREA

- Explore art, history, and culture at the Koshare Museum, the Otero Museum, and Bent's Old Fort National Historic Site.
- Hike Picketwire Canyon to North America's longest set of dinosaur tracks.
- Indulge in some of the best Mexican food in the state at one of La Junta's six highly recommended Mexican eateries.
- Shop the farm markets of the Arkansas Valley for Rocky Ford's world famous crops.

